



# Low Season March Special

Valid from 1st to 31st March 2025

## CLASSIC ROOM



B&B Per Person Per Night	US\$ RACK
Sharing	172
Single	246
Children U12 sharing	86
Children U12 single	124

Double and Twin Classic Room options are decorated with comfortable and contemporary decor including railway teak furnishings, as a memoir of the grandeur of days gone by. All Classic Rooms offer spacious rooms, ensuite bathrooms, air-conditioning and views of the hotel gardens. Interleading room options are also available.

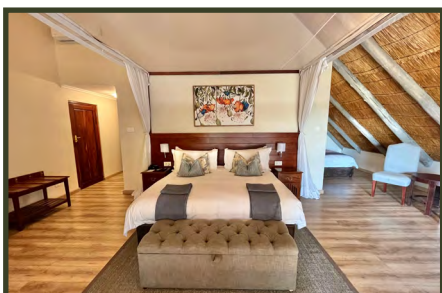
## DELUXE ROOM



B&B Per Person Per Night	US\$ RACK
Sharing	199
Single	284
Children U12 sharing	99
Children U12 single	143

Situated in the stylish West Wing, the Deluxe Rooms ooze old-world charm and sophistication. Ideal for couples, solo travellers and families alike, the Deluxe Rooms feature either twin or double configurations. Interleading room varieties are also available. All Deluxe rooms offer double vanities and a private patio off the bedroom overlooking the manicured hotel gardens.

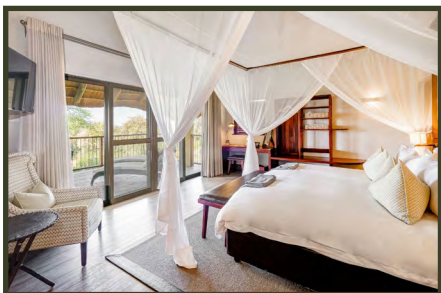
## CLASSIC SUITE



B&B Per Person Per Night	US\$ RACK
Sharing	246
Single	307
Extra adult sharing	135
Extra child U12 sharing	84

The Classic Suites are equipped with private balconies, King-size bed, writing desk, mini-bar cabinet, luggage storage and an additional ¾ bed neatly tucked around the corner in a private section of the room. The en-suite bathroom includes a walk-in overhead shower, double vanities and a large bathtub. The Classic Suite has interconnecting capabilities with an adjoining Classic Twin room.

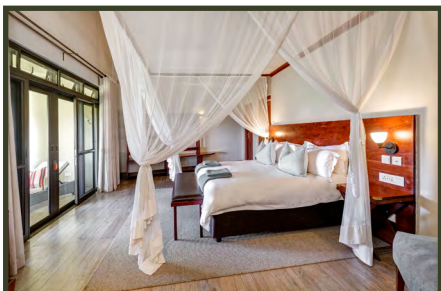
## EXECUTIVE SUITE



B&B Per Person Per Night	US\$ RACK
Sharing	284
Single	356

The Executive Suites are equipped with a sumptuous King-sized bed with en-suite bathroom containing a walk-in shower, double vanity basins and a separate bathtub. Adjoined to the bedroom is a spacious private lounge offering a modern and homely space in which to unwind. The décor includes delicate pieces of local artwork and is complete with contemporary furniture overlooking a large spacious private balcony with views of the hotel gardens and facing the direction of the mighty Victoria Falls.

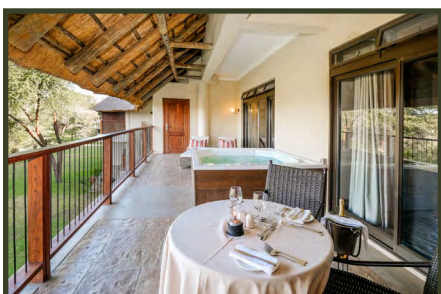
## STRATHEARN SUITE



B&B Per Person Per Night	US\$ RACK
Sharing	378
Single	472

Fashioned with modern and sophisticated décor, the Strathearn Suite offers guests a tranquil haven of relaxation. The suite comes complete with a private host, spacious lounge, kitchenette, en-suite bathroom with double vanity basins, walk-in shower and an indulgent bathtub. There is a private balcony, where guests can enjoy a large spa bath while enjoying world-class views of the spray rising above the mighty Victoria Falls.

## STRATHEARN FAMILY SUITE



B&B All 3 rooms per night	US\$ RACK
Family Suite *6th person stays free	1,524

The Strathearn Suite can also be transformed into a comfortable and spacious family villa, via a pair of interleading doors into a secondary suite and deluxe guest room. The family villa can host up to 6 guests and is also complete with a private host, spacious lounge, kitchenette, en-suite bathroom with double vanity basins, walk-in shower, indulgent bathtub and private balcony.

## TERMS & CONDITIONS

Special offer valid for new bookings only for guests staying between 1st and 31st March 2025.

Special offer valid for all nationalities

2 and 3 night value adds as detailed on the 2025 rates still apply.

A 20% non-refundable deposit must be made within 30 days from the date of placing the booking, if the booking is within 60 days of travel full payment is required.

Includes 15% VAT and 2% Government Tourism Levy.

The hotel reserves the right to amend the above rates in line with any government statutory increases.

Rooms will be held until 18:00 hrs, after which rooms will automatically be released unless the hotel is informed of late arrivals.